

US MBD

# Mercer/Gartner Information Technology Survey

## Attract and retain qualified technical talent

The demand for tech workers never seems to slow down. Staying up to date on the latest IT landscape is key to attracting and retaining the people your business needs for continued success. With the US MBD: Mercer/Gartner Information Technology Survey learn exactly how much to pay tech employees of all skill levels and career streams.

**1,157 positions published**[<<View full list>>](#)

### Top 20 matched positions

1. Software Development Engineering (High Tech) – Senior Professional
2. Software Development Engineering (High Tech) – Experienced Professional
3. General IT Applications Development – Senior Professional
4. IT Business Systems Analysis – Senior Professional
5. Software Development Engineering (High Tech) – Specialist Professional
6. General IT Applications Development – Specialist Professional
7. General IT Applications Development – Experienced Professional
8. General IT Infrastructure Systems Administration – Senior Professional
9. IT Business Systems Analysis – Specialist Professional
10. IT Business Systems Analysis – Experienced Professional
11. Technical Project Management – Specialist Professional
12. General Information Technology – Manager
13. Technical Project Management – Senior Professional
14. General IT Infrastructure Systems Administration – Experienced Professional
15. IT Systems Analysis – Senior Professional
16. Information Systems Security – Senior Professional
17. General IT Infrastructure Systems Administration – Specialist Professional
18. IT Data/Voice Network Administration – Senior Professional
19. Software Architecture Engineering (High Tech) – Senior Professional
20. Software Architecture Engineering (High Tech) – Specialist Professional



### Position families analyzed

- Communications & corporate affairs
- Creative & design
- Data analytics/warehousing, & business intelligence
- Engineering & science
- Finance
- General management
- IT, telecom & internet
- Legal, compliance & audit
- Project/program management
- Quality management
- Sales, marketing & product management
- Supply chain



### Career streams analyzed

- Executive
- Management
- Professional
- Para-professional



### Data collected

- Base pay
- FLSA status
- Long-term incentive eligibility and grants
- Organization data
- Short-term incentive eligibility and amounts
- Years in organization
- Years in position



### 2,683 companies submitting data

[<<View full list>>](#)

Mercer surveys are built using employee data collected from companies. The act of submitting data to a survey is known as survey participation and your company is then viewed as a participant that is entitled to receive these great benefits:

- A discount on the survey results.
- Exclusive invitations to events that provide expert insight into the survey results.
- The ability to compare your data to peer companies or competitors that you select.



### Survey schedule

Participation runs from February through April with results published in August.

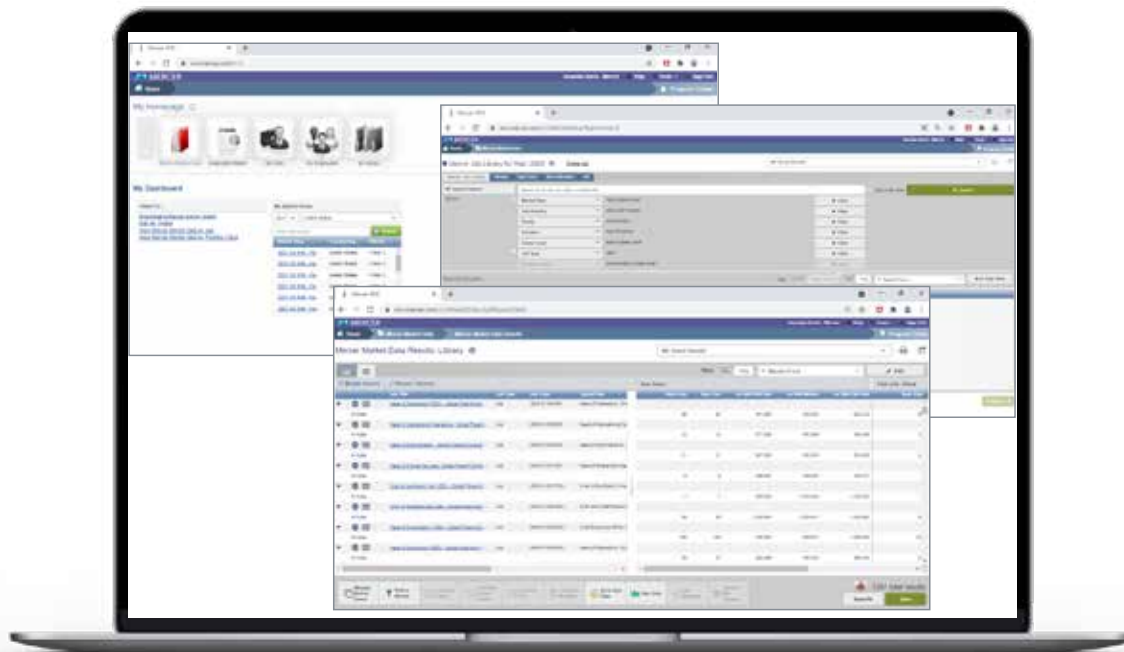


### Pricing

**\$2,300 - Participants**      **\$6,025 - Non-participants**

## Mercer WIN®

Survey results are published in Mercer WIN offering you simplified, single-point access to a broad range of data and analytics. Customize your analysis with ease.



## Sample report

Compensation Element	No. of Orgs	No. of Obs	*/**	Inc Wtd 10th %ile	Inc Wtd 25th %ile	Inc Wtd Mean	Inc Wtd Median	Inc Wtd 75th %ile	Inc Wtd 90th %ile
Base Salary	77	503	*	40,000	45,760	60,928	53,456	72,084	91,987
Salary Min	41	106		42,200	48,000	55,714	52,900	61,033	73,960
Salary Mid	42	111		54,700	60,000	71,137	67,100	76,250	94,000
Salary Max	41	106		70,080	72,825	88,052	81,100	95,186	122,200
STI Threshold % Base	6	12	*	--	--	3.1	2.8	--	--
STI Target	34	112	*	2,036	2,668	5,926	4,289	8,542	12,560
STI Target % of Base	34	112	**	--	--	7.2	7.0	--	--
STI Maximum % Base	16	62	**	--	--	11.7	8.0	--	--
STI Actual	28	101	*	1,871	2,367	5,886	4,180	8,114	12,700
STI Actual % Base	28	101	**	--	--	7.2	5.7	--	--
Sales Incentive (Target)	9	53	*	11,692	13,288	19,636	16,513	22,223	30,250
Sales Incentive Target % Base	9	53	**	--	--	28.4	20.0	--	--
Sales Incentive Actual	12	61	*	7,328	13,235	45,910	31,777	70,230	106,142
Sales Incentive Actual % Base	12	61	*	9.7	21.3	94.9	40.9	164.4	244.3
Profit Sharing Actual	2	2	**	--	--	--	--	--	--
Profit Sharing Actual % Base	2	2	**	--	--	--	--	--	--
<b>Total Cash - Target</b>	<b>61</b>	<b>262</b>		<b>49,864</b>	<b>58,334</b>	<b>79,249</b>	<b>74,380</b>	<b>94,791</b>	<b>116,840</b>
Total Cash Target - Receivers	40	155		54,601	69,784	89,263	85,244	102,797	130,082
<b>Total Cash - Actual</b>	<b>77</b>	<b>503</b>	*	<b>40,019</b>	<b>46,010</b>	<b>67,693</b>	<b>56,476</b>	<b>80,000</b>	<b>114,305</b>
Total Cash Actual - Receivers	41	164		56,616	70,716	94,153	88,520	114,902	140,855
LTI (B-S)	5	11	**	--	--	17,845	5,000	--	--
LTI % of Base (B-S)	5	11	*	--	--	20.9	7.6	--	--
<b>TDC Target (B-S)</b>	<b>61</b>	<b>262</b>		<b>49,864</b>	<b>58,334</b>	<b>79,987</b>	<b>75,108</b>	<b>94,825</b>	<b>122,771</b>
TDC Target (B-S), Rcvrs	4	10	*	--	--	--	--	--	--
<b>TDC Actual (B-S)</b>	<b>77</b>	<b>503</b>	*	<b>40,019</b>	<b>46,010</b>	<b>68,083</b>	<b>56,476</b>	<b>81,360</b>	<b>115,461</b>
TDC Actual (B-S) Rcvrs	5	11	*	--	--	100,709	85,982	--	--
Tenure - Organization	73	496	*	0	1	7	3	7	19

Contact us to order or for more information

[imercer.com/MBD](http://imercer.com/MBD)

888 942 4111

[surveys@mercer.com](mailto:surveys@mercer.com)